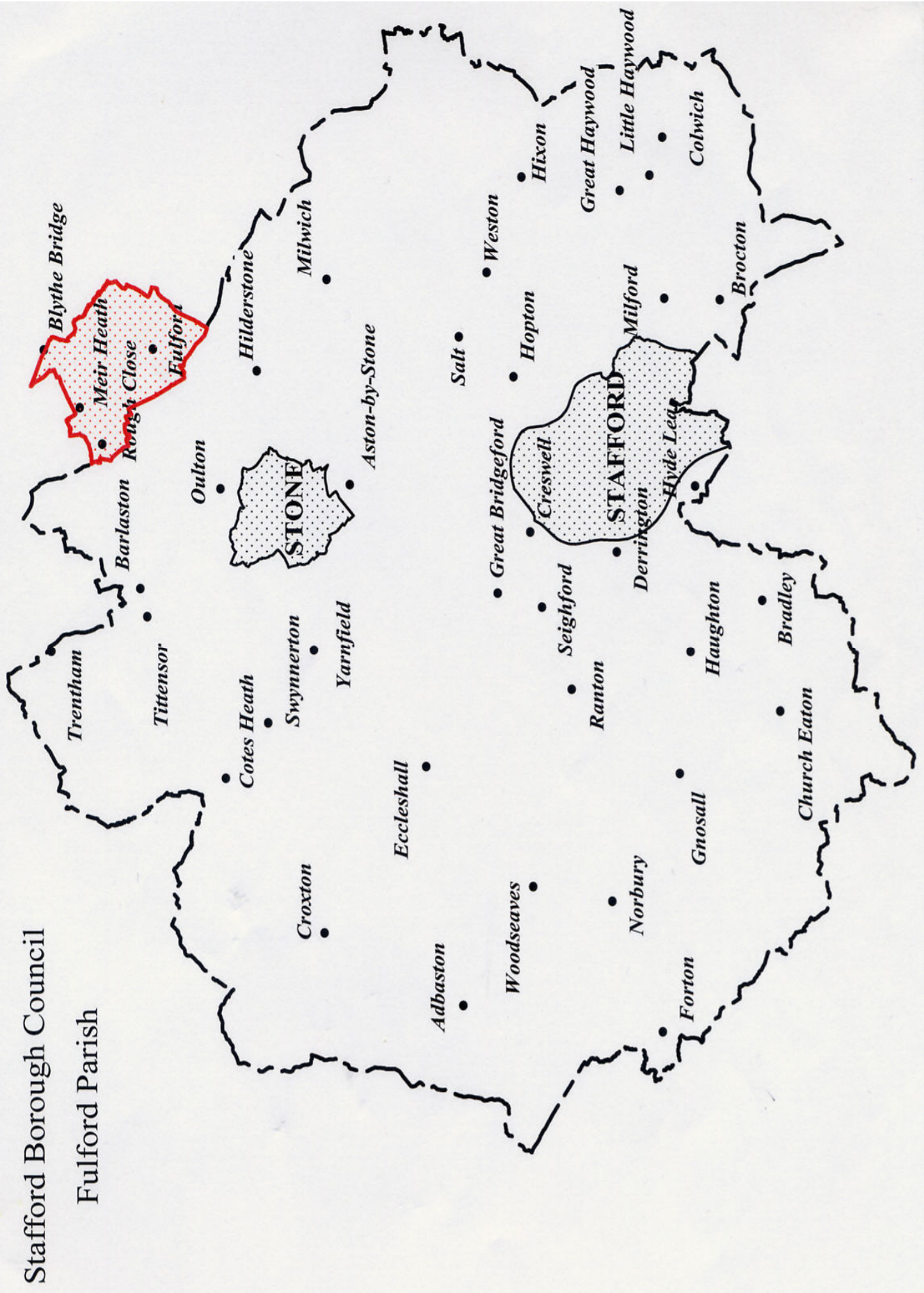


FULFORD PARISH PLAN



DECEMBER 2007

MAP OF FULFORD PARISH



Foreword

The Parish Plan gives everyone a chance to say what they think about the social, economic and environmental issues affecting life in rural communities, and how they'd like to see it improved in the future. It is important that the whole community is involved in producing the Plan, not just those people who usually come along to Parish Council meetings.

A Parish Plan, when properly completed and used correctly, can be a very useful and important document for the Parish Council and the people of the Parish.

Fulford Parish covers a diverse area from very rural and farming communities to areas of dense housing and urban traffic conditions. Nevertheless many of the issues are common across the Parish and the Council strives to address all of these by working with Borough and County authorities, and will submit this plan as input to the higher authorities own Strategy and Local Development Framework documents.



Residents' direct contribution to Parish Council funds, the Parish Precept, is raised by the Parish Council and paid via the Council Tax, which is collected annually by the Borough Council and used specifically to fund the needs of the parish.

When village organisations need to raise money to fulfil their ambitions, the plan hopefully provides the vital information needed, and sometimes insisted upon by

potential funding organisations. In most cases a need has to be proved before funding bodies will release money. A Parish Plan is an ideal way of proving that need.

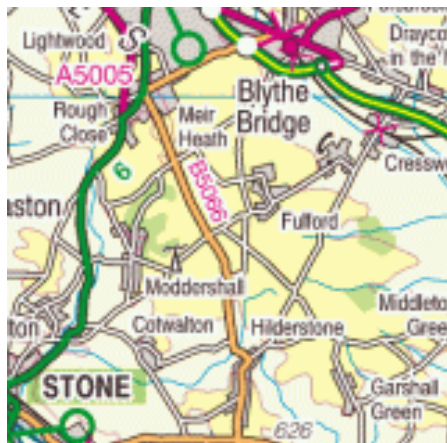


Considerable progress has been made in developing this Parish Plan; successful implementation will depend on the residents working together for the benefit of the community.

The various aspects of the Parish Plan will be periodically discussed at Parish Council meetings, with a view to inviting members of the parish to form working groups which will develop and implement various projects. Parish Council meetings are held in either Fulford or Meir Heath & Rough Close Village Hall at 7.15 pm on second Thursday of each month. When a particular topic is to be discussed it will be advertised in the Parish Magazine, on the website and on local Notice Boards; please attend these meetings to make a difference.

On behalf of Fulford Parish Council we would like to take this opportunity of thanking all of you who took the time to complete the questionnaire, contributed to the development of the plan, and can assure you we will make every effort to maintain and develop the Parish in line with the wishes of the community as a whole.

*Martin Oxby & Barry Shaw
Chairmen 2006 - 2007*



Members of the Parish Plan working party:

Tim Beasley
Frank Colclough
Martin Manley
Martin Oxby
Barry Shaw
Shirley Wheat

Special thanks to:

- The Community Council of Staffordshire for providing funding for the Parish Plan



- To all those who responded to the questionnaires
- Particularly to Emma Beaman for her invaluable assistance and guidance in the preparation and formulation of this document

CONTENTS

CONTENTS	PAGE
Front cover	i
Parish map	ii
Foreword by the Chairmen of Fulford Parish Council	iii
Members of the Parish Plan working party	iv
Contents page	v
Introduction to the plan	1
Demographics of Fulford Parish	2
Household Section	3
Public Transport Section	4 - 6
Traffic Section	7 - 10
Environmental Section	11 – 13
Local Facilities Section	14 – 17
Public Services Section	18 - 20
Appendix 1 – Parish contacts	21 - 23
Appendix 2 – Questionnaire findings	24 – 25

Introduction

The Parish Plan was instigated by Fulford Parish Council in the spring of 2006. The aim was to involve as many local residents as possible in creating a vision for the future management and development of our Parish. Maximum participation and full consultation were the underlying principles of the project. A questionnaire to identify areas of concern was distributed, the results of which formed the basis of the action plan. 2500 questionnaires were sent out and 900 were returned, a 36% response rate. In the body of the report the numbers of respondents who replied to a particular element are stated along with the percentage of the replies this reflected.

Parish Plan

A Parish Plan is a document that is compiled from the aspirations and opinions of people in the local community. It is a plan of what people see as their vision for the future and how they would like to see the parish develop over future years. It also contains 'actions' necessary to achieve those objectives. The actions can be instigated by various groups, both within and outside the parish, and should also assist with grant applications for funding.

It began originally in 2001 when the Countryside Agency set up the scheme called the Vital Villages Programme. In the West Midlands region forty million pounds was allocated to the scheme. Under the programme were four different types of grant; the Parish Transport Grant, Rural Transport Partnership, Community Services Grant and Parish Plan.

For each parish £5,000 was available for a Parish Plan and this was applied for by the parish council. The parish council acts as the main body responsible for the Parish Plan. They should then set up a Parish Plan steering group combining various people in the local community. The parish council must provide 5% cash match funding, and 20% voluntary labour within the community.

In Fulford, work on the plan began in January 2006 with the application for a grant to help produce the plan being sent to the Community Council. £2300 was awarded in February 2006 and a further £1000 in June 2006. Discussions then took place to assess the best way to set up a group and produce a questionnaire.

A sample questionnaire was issued to approximately 80 residents of Fulford Parish and there was an excellent response from the community. The idea of this initial questionnaire was to gather topic ideas for the final questionnaire. The final questionnaire was then created covering a variety of topics and was delivered to all households in Fulford Parish in February 2007. From the response to the surveys the results were collated and assessed.

The working group has looked at the issues raised and discussed possible solutions that will move the important issues forward. The results of this work have produced this Parish Plan publication, which can be used as a guide for the future of this parish, and also help obtain funding for the many organisations that contribute so much to the parish of Fulford.



The Windmill at Meir Heath

Demographics of Fulford Parish

The Parish of Fulford in North Staffordshire is semi-rural and borders the southeast boundary of Stoke-on-Trent; it is four miles northeast of Stone and twelve miles north of Stafford. The civil parish is one of the largest in Stafford Borough and includes four wards – Blythe Bridge (part is in Stafford Borough and part in Staffordshire Moorlands), Fulford (which includes Cross Gate, Moss Gate, Saverley Green, and Stallington communities), Meir Heath, and Rough Close - in all approximately 2400 dwellings with over 4800 electors. The largest ward is Meir Heath with over 1700 electors, Blythe Bridge with over 1500, Fulford with 1000, and Rough Close with 600. Whilst a significant amount of housing is located in Blythe Bridge and Meir Heath, the parish is mainly rural with much located in the Green Belt of North Staffordshire.



Grindley Lane

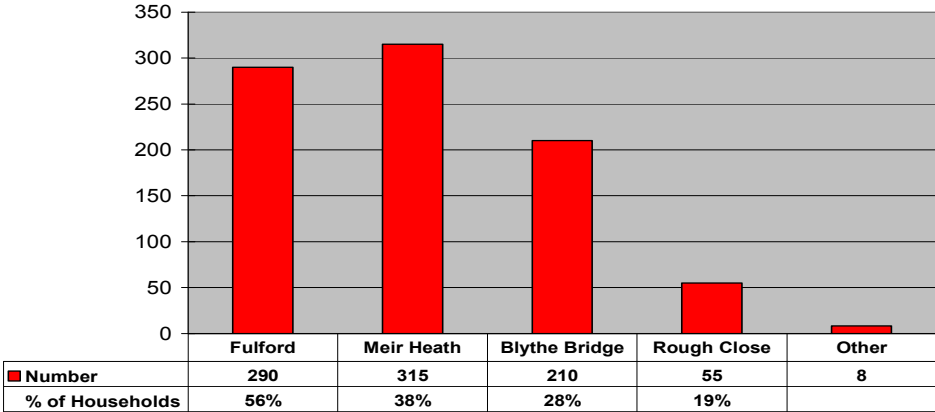
2001 Social Census		
<u>Age</u>	<u>Population</u>	
0-4	199	3.6%
5-14	578	10.4%
15	66	1.2%
16-19	260	4.7%
20-29	424	7.6%
30-44	1023	18.3%
45-59	1418	25.4%
60-74	1078	19.3%
75-84	404	7.2%
85+	129	2.3%

2001 Social Census	
Total Household Spaces	2375
Occupied Household Spaces	2328
Vacant Household Spaces	47
Average household size	2.35
All Single Person Households	533
All lone pensioner households	345
All pensioner households	688
Single Parent households with dependent children	77
Single Parent households with non-dependent children	66
All households with dependent children	581
Households with no employed adult and dependent children	57

HOUSEHOLD

The questionnaire was distributed to every household in the parish, and about 900 questionnaires were returned. The first question asked for people to categorise which area they lived in, 5 options were available. The graph below identifies the number of respondents in each area.

Graph illustrating the number of Respondents to the Questionnaire



LOCAL STATISTICS

The population of Fulford parish was as follows:

1861 -- 411	1921 - 707
1872 -- 475	1931 - 1175
1891 – 607	1991 - 5670
1904 – 660	2001 - 5579

In 2001 the total number of cars owned in the area = 3385
Average per household = 1.45

COUNCIL MATTERS

Many aspects of parish life such as the environment, housing and services in general are affected, or even determined by the planning system. Staffordshire County and Stafford Borough Councils largely control these, although there are some matters that are decided under the direction of government ministries such as the Department of Transport and the Department of Environment, Food and Rural Affairs. Parish Councils have very limited powers in this respect, but they may be consulted and invited to offer advice on certain matters. Parish Council meetings offer an opportunity for the community to have their say if they wish to, however only 54% are aware of the meetings and only 36% know about the parish website which contains information on these meetings.

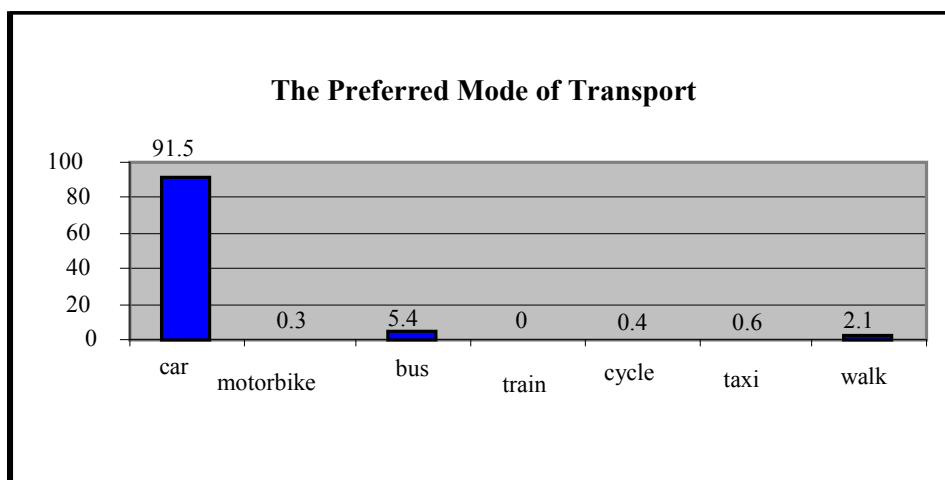
49% of people do not know who their local Parish Councillor is, 67% don't know their Borough Councillor and 66% do not know their County Councillor. Only 35% of people know how parish council money is spent, of these people only 31% are happy with the way it is spent. One possible solution to this is for local people to have a greater input in parish matters and attend parish council meetings and have their say. More publication is required of parish meetings and events. In addition, the parish website allows people to email comments to the parish clerk and ask any questions they may have. The website is <http://www.fulford-parish-council.org/>

PUBLIC TRANSPORT

It is an accepted fact in today's society that there are too many vehicles on the roads. The continuing reliance on private cars is damaging to the environment, is a wasteful use of fossil fuels and can affect the quality of lives of those living alongside roads as well as being a hazard to those who wish to use the road for cycling, walking, running or horse riding.

It is generally recognized that people will not be persuaded out of their cars unless there is a reliable and economic alternative form of transport. Public transport is vital for those who do not have access to a car and the elderly who no longer drive.

The Countryside Agency's "Vital Villages" programme was a short term funding stream that attempted to tackle these rural issues. However, for those who did not apply there was no benefit. It is anticipated that later in 2008 a new fund will replace the latter to enable community groups that missed out the first time round, to be successful this time. The Parish Plan with help to achieve successful funding bids.



Moss Lane

- 91.5% of people use the car as their main mode of transport
- Only 5.4% of people use the bus as their preferred mode of transport
- Only 24% know local bus times
- 32% of people would use buses if more destinations were available and 33% if they were more frequent

THE ISSUES

- **Improvements to the established bus services with an increased number of routes and better timetables**
- **Lack of public transport**
- **Reliance on cars for all day to day activities**
- **Taxis are expensive and not always available**



Meir Heath

VISION FOR THE FUTURE

- **Compile a list of volunteers for the voluntary transport scheme**
- **Liaise with Staffordshire's Rural Access to Services Officer (RASP) on 01785 242525 and Stafford County and Borough Council to look at increasing the number of bus routes**
- **Liaise with Staffordshire's Community Transport Officer and Staffordshire County and Stafford Borough Council to look at improving the already established bus service**
- **Encourage more localised car sharing**
- **There is a need for locally organised, tailored transport in the Parish**
- **Publicise local bus times more in local magazines, parish notice boards etc**

ACTION PLAN SUMMARY

PUBLIC TRANSPORT

Issue	Vision	Action	Partners	Priority	Timescale
Bus service needs improving, the current service is inadequate, has poor routes and timetable	A reliable bus service that allows flexible transport to all local areas / towns, with disabled access and more bus shelters	<p>Liaise with East Staffs Rural Transport Partnership Officer- David Allen and look at where demand is for bus routes, and where funding is available for improvements.</p> <p>Discuss the RASP (Rural Access to Services Partnership) scheme with the Community Council.</p>	<p>Staffordshire County Council</p> <p>East Staffs Rural Transport Partnership Officer at The Community Council of Staffordshire</p>	Medium	Ongoing
Reliance on cars for day to day activities	A fully integrated bus service at all times of the day that allows people to revert from their car to public transport. Voluntary car scheme and car sharing	<p>Liaise with East Staffs Rural Transport Partnership Officer- David Allen.</p> <p>Set up a voluntary car scheme.</p> <p>Promote car sharing locally.</p> <p>Liaise with the local council to look at more publication of timetables and put them on the council website.</p> <p>Encourage more localised car sharing.</p>	<p>Staffordshire County Council</p> <p>East Staffs Rural Transport Partnership Officer</p> <p>Parish Council</p>	Medium	Long term.

TRAFFIC

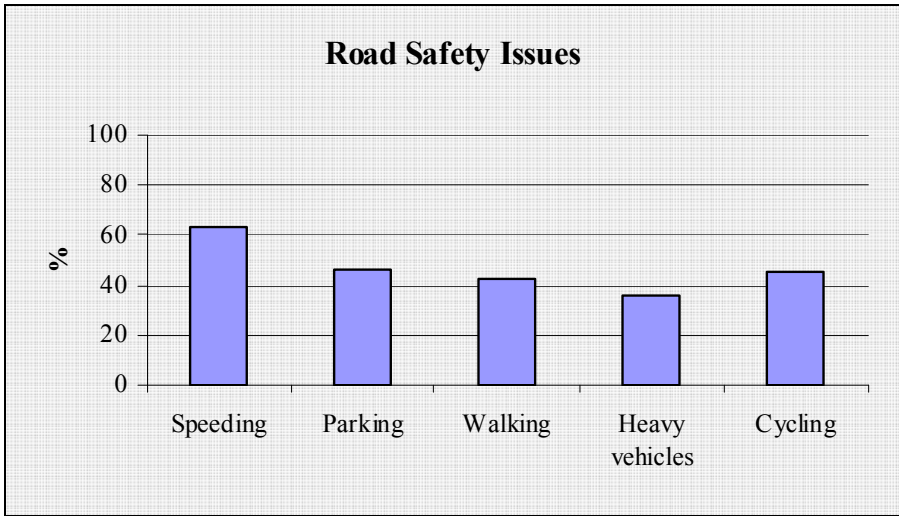
“The roads are dangerous only where people drive too fast and park thoughtlessly. The solution lies in every single person who drives!”

The survey revealed that 63% of people felt that speeding is a problem within the Parish, and 46% felt that inconsiderate parking is also a problem. Numerous danger spots were identified with regards to speeding and parking especially at school time when parents are dropping off or collecting their children from school.



Rough Close

In some places it simply may not be possible to improve safety without expensive and inappropriate road widening etc. The solution is that all vehicles should be driven with care. The Parish Council need to work with the County Council to look at possible solutions in areas where effective measures are required.



Perhaps high levels of car usage in the parish contribute to the fact that a large majority of respondents believe speeding and traffic to be a problem. When asked about local safety issues in addition to parking and speeding 36% of people viewed heavy vehicles as a problem 42% of people felt that there were safety issues when they are walking and 45% when they are cycling. Vegetation and trees encroaching on the road was identified as another safety issue as they reduce visibility.

The problems of the ‘school run’ have increased since more parents commute from outside the parish. Whilst alternatives such as ‘walking buses’ can be used, and the Education and Highway Authorities should investigate every possible option to them. The solution lies with each and every person who takes a car to the school. More car sharing could reduce the problem.



Meir Heath



A50 bypass

THE VISION

- A future where motorised vehicles do not affect the quality of life of people living in the parish would be welcomed
- Cars should be driven with care and consideration for everyone using the road and to protect the environment
- Traffic calming methods should be introduced near to schools and throughout the parish where speeding has been identified as a problem
- Investigation of all possible alternatives for reducing the hazards of the 'school run'
- Promote increased vigilance by local PCSO's
- Promote the adoption of a 'walking bus'
- Encourage car sharing on the 'school run'
- Greater control of indiscriminate parking of vehicles and prosecution for parking illegally

ACTION PLAN SUMMARY

TRAFFIC

Issue	Vision	Action	Partners	Priority	Timescale
<p>Need for traffic regulation.</p> <p>Speed reduction throughout the parish</p> <p>Narrow roads and dangerous corners</p>	<p>Cars should be driven with care and consideration to all road users and for the environment</p>	<p>Investigate the possibility of speed limits and speed calming measures throughout the parish especially near schools.</p> <p>Support for any schemes to reduce speeds on country lanes to even lower limits.</p> <p>Hand-held speed gun scheme - attempt to get more volunteers involved.</p> <p>More safety cameras and slow down signs.</p> <p>Look at where the main traffic problems are.</p>	<p>Staffordshire County Council Highways</p> <p>Staffordshire Police (Safety Camera Partnership)</p>	<p>High</p>	<p>Medium term.</p>
<p>Speed of traffic through villages</p>	<p>To ensure that drivers conform to the speed limit whilst travelling through the village</p>	<p>Investigate the possibility of installing 'Matrix Message Signs' at points along the roads in the villages.</p> <p>Lobby support from Borough and County Councillors and MP.</p>	<p>Borough & County Councillors</p> <p>Staffordshire County Council Highways</p> <p>Staffordshire Police (Safety Camera Partnership)</p>	<p>High</p>	<p>Medium/Long term</p>

Issue	Vision	Action	Partners	Priority	Timescale
Potential traffic hazards Parking on kerbs and double parking	To ensure that vehicles are parked in allocated places and don't cause a hazard to walkers or cyclists	Investigate the possibility of a 'bobby on the beat' to monitor illegal parking. Lobby support from Borough and County Councillors and MP.	Borough & County Councillors Staffordshire County Council Highways Staffordshire Police (Safety Camera Partnership)	Medium	Long term.
Safety on rural lanes	To improve the safety of rural lanes	To investigate - speed limits - the establishment of quiet lanes	Staffordshire County Council Highways	High	Long term
School traffic Car parking on the side of the road and on grass verges	To improve safety in the vicinity of schools. To reduce the dependence on car transport.	Consult with the police regarding parking issues. Encourage parents to use the existing car parking facilities. Encourage more car sharing and walking to school, walking bus. Seek solutions to prevent parking on grass verges.	Borough & County Councillors MP Staffordshire County Council Highways Staffordshire Police Parish Council All local schools	High	Long term

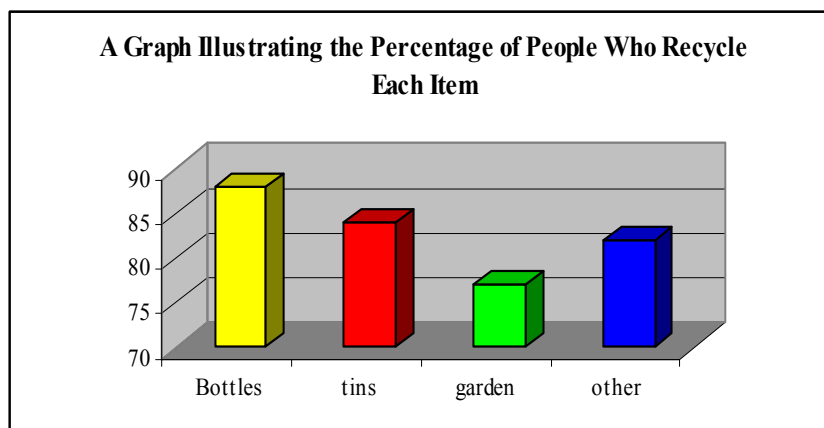
ENVIRONMENTAL ISSUES



To the outside observer it is clear that much of the parish provides a very pleasant environment in which to live. The importance of maintaining an attractive parish is underlined by the fact that it was recorded in the survey that 82% of people are concerned about litter and general tidiness, 84% of people are concerned about the greenbelt and 81% feel that the general appearance of the villages is very important.

COUNCIL MONEY– People felt quite strongly that a number of things could be done to further improve the environment of the community and that council money should be used to fund this. 67% of respondents felt that the maintenance of roadside footpaths is top priority, particularly in Grindley Lane. 52% of people felt more money should be spent on the maintenance of countryside routes. Blocked footpaths are creating a major obstruction to walkers where styles have been removed and other things obstruct the path. Poor signage is also a problem. 62% of people would like more money spent on the maintenance of parkland and 53% would like more on wildlife preservation areas.

The dilemma between the realisations that the car is environmentally damaging, and a continuing heavy reliance upon its convenience is something that planners and politicians everywhere have to take into consideration. The issue is clearly recognised too by the amount of people who already recycle (88%), and 74% find it convenient to recycle. However, 39% of people would recycle more if collection points were nearer. Suggested recycling points included local village halls, community centre and public houses. Most people are willing to recycle but would prefer individual recycling bins at home. However, since this questionnaire was distributed paper and clear plastics have started being collected by the council.



People would also like recycling points where they can recycle cardboard, plastics, foil, newspapers, shoes, textiles, toys and clothes!

DOG FOULING

In the parish dog fouling appears to be a major problem with 61% experiencing problems. 66% of people would like more dog bins installed, more dog fouling notices and designated areas for dog walkers; (examples included Heath Grove, Grindley Lane, Stallington Road, Rough Close and Barlaston Common).

OTHER ENVIRONMENTAL ISSUES – 70% of people felt that the street lighting is adequate and 26% would like more street lighting introduced in a number of areas including all local footpaths and pavements, Adamthwaite Drive, Blythe Close, Mayfield Drive, Sutherland Crescent (Blythe Bridge), Hollies Drive (Meir Heath), Fulford Road (Fulford). Many others were also identified.

POSITIVE ASPECTS

- **71% of people said that recycling is very important to them**
- **83.5% of people said that the preservation of the green belt is very important to them**
- **79% said that preservation of wildlife is very important to them**
- **71% said that preservation of local landmarks is very important to them**
- **81% said that the general appearance of the parish is very important to them**

THE ISSUES

- **Poor maintenance of road verges and pavements**
- **Lack of recycling facilities**
- **Dog fouling**
- **Too much litter**
- **Lack of footpath signage**
- **Poor maintenance of footpaths**
- **Not enough lighting in some areas**
- **Traffic noise**

OUR VISIONS

- Have regular spring clean up days. Seek funding for equipment from the Local Member Initiative Scheme (LMIS) and other sources
- Education of school children regarding the local environment
- Put dog fouling prevention measures in place
- Increase the number of dog litter bins
- Consult with Local Authority and Police to implement fines for dog fouling
- Liaise with the Local Authority to establish their plans for management of roadside verges. They need to comply with the Weed Act and eradicate pernicious weeds.
- Liaise with the local council to continually improve the recycling service for the Parish
- Investigate whether we can provide local recycling sites on public house car parks, village halls or community centres
- Liaise with the County Council to establish better signage for footpaths and bridleways and seek funding for new signs or even a parish footpath map
- Provide a parish map in accessible locations containing information on footpaths, bridleways, car parking, local services and facilities
- Improvements to the footpath network, including the removal of stiles and replace with kissing gates where possible
- Improvement of pavements and removal of overgrown fauna including weeds
- Liaise with the County Council about the possibility of conducting a survey into street lighting and identify areas that need more and those that need less. Consult with the local community.

ACTION PLAN SUMMARY

ENVIRONMENTAL ISSUES

Issue	Vision	Action	Partners	Priority	Timescales
Too much litter	A reduction of litter throughout the parish	Liaise with the local council to gain funding for litter picking equipment and litter signs. Have spring clean up days. Provide more litterbins. Education of school children.	Staffordshire County Council	High	On-going
Poorly maintained roadside verges	Pleasant / visually appealing roadside verges	Liaise with the local council to establish their plans for roadside verges.	Staffordshire County Council, Stafford Borough Council	Medium	As soon as possible
Dog fouling	A pleasant / clean environment	Education of school children. Review and renew signs regarding dog fouling. Encourage prosecution for dog fouling cases Increase the number of dog litter bins.	Local schools, Villagers, Staffordshire County Council, Stafford Borough Council	High	Immediate / ongoing
Poor signage for footpaths	Better signage throughout the village to enable people to go for walks or ride their horses without them feeling they are trespassing.	Liaise with the local council to establish where the footpaths and bridle paths are. Research funding for new signs. Provide a parish map in accessible locations containing information on footpaths, bridleways, car parking, local services and facilities. Formation of a footpath group to investigate the possibility of producing a local map and leaflet. Improvements to the footpath network, including the possible removal of stiles and replace with kissing gates.	Staffordshire County Council, Stafford Borough Council, Parish Council, Community Council of Staffordshire (funding)	Medium	On-going/ long term
Lack of recycling facilities	Individual recycling bins and composting bags for each household	Liaise with the local council to establish if they can provide a recycling service for the Parish similar to the one that is currently operating in the Staffordshire Moorlands.	Staffordshire County Council, Stafford Borough Council, Parish Council, Staffordshire Moorlands District Council	Medium	On-going/ long term

LOCAL FACILITIES

Over recent years it is very common for services in villages to have declined, perhaps under the dual influence of competition from larger outlets such as supermarkets in the retail sector, and the tendency for public agencies to concentrate many of their services into larger settlements. To some extent this is also the outcome to the greater levels of mobility created by widening car ownership in rural areas, but there remains significant numbers of the population, especially the elderly and children, for whom the car is not available.



Fulford Village Hall

Fulford has a public house in the heart of the village, its own actively supported Village Hall, a Primary School, an Anglican Church and a Methodist Church at Cross Gate. A football club uses a pitch on the edge of the village and there are further public houses within walking distances.

In neighbouring Stallington Village, plans have recently been approved for recreational facilities to be erected on and around the playing field at the heart of this recently expanded small community.

In the heart of Meir Heath there are local amenities such as convenience stores, a newsagent, church, and public house.

Two additional public houses are within walking distance of the centre. Meir Heath and Rough Close Village Hall, extended in 2006/7 included the provision of an office for Fulford Parish Council and serves the local communities.



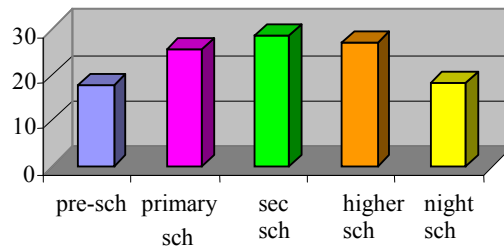
Meir Heath & Rough Close Village Hall

Adjoining it is the Parish owned Grindley Park where plans exist to add children's play equipment. There is a large Primary School, accommodating almost 400 pupils. Football and cricket clubs have pitches and facilities on the edge of the village.

Rough Close adjoins Meir Heath and also has public houses and access to a primary school. Barlaston Common is a particularly important feature and is designated a Grade 1 Site of Biological Interest and a Local Nature Reserve due to its mixture of heath, grassland and wooded habitat.

Blythe Bridge residents benefit from a local Primary School and an array of shops with further facilities in the heart of the village that lies in the adjoining parish of Forsbrook within Staffordshire Moorlands. These include the area High School, recently refurbished Library, shops, several public houses, and churches. A small business site offers some local employment together with some other private enterprises.

Graph Illustrating the Percentage of People that thought Each School Was Very Important



“when asked how important each stages of education were to the family secondary education came out as most important”

The survey shows that there is a general lack of activities for all ages particularly the young people and teenagers. They would like to see new activities for example; sports events, teenage youth council, more indoor and outdoor sports facilities and play activities, scouts, mini moto track, chip shop, a village hall being free for one evening per week with no charge for entertainment or just somewhere for them to hang out, youth clubs, football pitch, internet café, drop-in centre, modern play area for under 2's and older children, and better transports links. Adults would like to see more publicity about what is available and when, more educational and social activities, evening entertainment, local rambles, village based IT classes, local post office, more accessible walks, return of badminton and circulate information about when and where travelling library is. The elderly would like a group get together, tea dancing, more educational and social activities, dancing, bowls, social afternoon, improvement of footpaths and dropped kerbs, special clubs, more sheltered accommodation (however what we have got is not full), improved bus service, more facilities for disabled and shops adhering to legislation, more seats on Rough Close Common, free swimming passes, free meetings with speakers of interest from all walks of life (community watchdogs), painting classes, luncheon clubs, bingo nights and someone to check that each elderly person is ok for shopping, heating, home repairs, prescriptions etc; especially as many of them live alone.

HIGHER EDUCATION

- 18% of people feel that Night School is very important
- 29% of people feel that they receive enough information on further education courses
- 41% feel there isn't enough higher education courses on offer
- 26% drive outside Fulford Parish for Night Classes

Local people would like to see classes available for them in their local area in the following categories: gardening, horticulture, languages, creative writing, history, water-colour painting, leisure, photography, flower arranging, history, woodwork, cooking, conservation, DIY, complementary therapies, First Aid, genealogy, tropical fish keeping, cake decorating, sugar craft and sewing.

OUR VISIONS

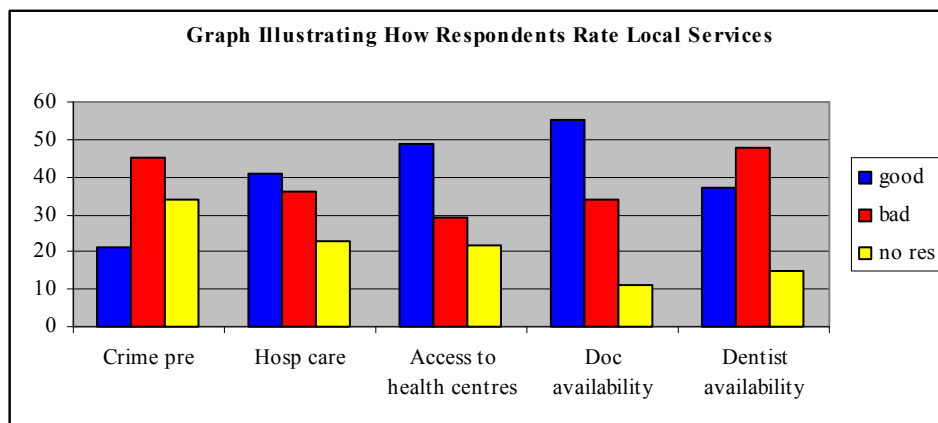
- Increase the use of facilities offered by Village Halls
- Liaise with the Village Halls Advisor at the Community Council of Staffordshire to discuss further funding for Village Halls
- Seek funding for further recreational activities for adults, older children and young people
- Liaise with the Local Education Authorities and Stafford Borough Council to see if they would be willing to have more localised courses
- Seek volunteers to help set up and run groups, seek funding and oversee activities
- Continue with traditional village activities
- Hold a community consultation event with the young people finding out what they want
- Seek funding for new play equipment and activity equipment
- Create a parish plan implementation group
- Community fund raising
- Develop procedures to identify priorities more explicitly and to enable more effective long term planning

ACTION PLAN SUMMARY

Issue	Vision	Action	Partners	Priority	Timescales
More activities at the village halls	A wide range of activities for all age groups within the parish	Do a further survey looking at the demand for particular groups. Seek funding from various grant givers e.g. Community Champions.	Villagers Parish Council	<i>Medium</i>	Medium - ongoing
Lack of sports facilities	A fully functional sports pavilion, bowling green and tennis courts Provision of play areas / schemes Provision for youth activities	Liaise with The Community Council of Staffordshire for advice on funding opportunities for sports activities i.e. Sports for England. Local fund raising events. Create an implementation group to oversee all new projects.	Villagers Parish Council Staffordshire County Council Stafford Borough Council Community Council of Staffordshire	<i>Medium</i>	Ongoing

PUBLIC SERVICES

The questionnaire asked respondents to rate 5 different services the results are displayed in the table below.



“77% would support local health / dental services if they were more local”

CRIME AND POLICING – The results of the questionnaire show that people are very disappointed with the local police. 62% of people feel that the area is not adequately covered. 49% of people are already in a Neighbourhood Watch scheme and more people would like one set up in their local vicinity. Many people felt that it would be nice to have a ‘bobby on the beat’ and an officer that got actively involved in the community that people would feel happy to talk to.

INFORMATION TECHNOLOGY – 63% own a computer with Internet access and own a printer. Of those who do not own a computer 14% would be willing to use the Parish Council facilities. Only 9% of people have visited the parish website.

THE ISSUES

- **Lack of policing**
- **Lack of knowledge of the parish website**
- **Lack of dentist availability**
- **Lack of crime prevention**

OUR VISIONS

- A visible ‘ bobby on the beat’
- Email updates from Fulford Parish Council to all people who would like to receive them
- Discuss with the relevant Authority the problem of dentist availability and seek solutions
- Discuss with the local police the possibility of them attending local events, visiting schools, attending occasional parish meetings, speed checks, having surgeries for local people
- Discuss with the police the possibility of them being present at youth clubs
- Promote the IT facilities available by the parish council to the community

ACTION PLAN SUMMARY

PUBLIC SERVICES

Issue	Vision	Action	Partners	Priority	Timescales
Promotion of village website	Greater usage of the website that allows people to look for village events, view council reports, book the village halls, etc.	Produce an email list so that new parish activities can be sent to all those on the contact list. Promote the website throughout the parish to increase the number of local hits.	Community Council of Staffordshire Villagers Parish Council, Staffordshire County Council, Stafford Borough Council	<i>Medium</i>	<i>Medium-ongoing</i>
Lack of higher education	A collection of available courses in the local area to meet the needs of the local community. Provision of transport for those who need it to attend courses elsewhere but can not get there.	Do a further survey looking at the demand for particular needs. Promote existing Adult & Community opportunities. Liaise with local education service.	Villagers Parish Council Staffordshire County Council Community Council of Staffordshire	<i>Medium</i>	<i>Medium-ongoing</i>

Issue	Vision	Action	Partners	Priority	Timescales
Crime and policing	Creation of a Neighbourhood Watch in areas where they are not already present	Hold a meeting to gain interest in a Neighbourhood Watch Scheme, with police officers attending.	Staffordshire Police Villagers, Parish Council, Staffordshire County Council, Stafford Borough Council	<i>Medium</i>	<i>Ongoing</i>
'Bobby on the beat' required in the parish	A visible police officer that people can contact easily and discuss any local problems. An officer that is available at school times to control parking problems. An officer available to attend youth clubs and other activities that involve high levels of young people. A local surgery available on particular days where people can drop in and discuss any problems they may have.	Liaise with the local police and crime prevention officer to establish whether we could have a local bobby on the beat in the parish. Provide a crime prevention visit for the local people especially the elderly.	Staffordshire Police Villagers, Parish Council, Staffordshire County Council, Stafford Borough Council	<i>High</i>	<i>High</i>

Appendix 1 - FULFORD PARISH CONTACTS INFORMATION

FULFORD VILLAGE HALL

MONDAY	BADMINTON 8.00 – 10.00 pm
TUESDAY	JU-JITSU 6.30 JUNIORS 7.30 ADULTS
WEDNESDAY	YOGA 6.30 – 8.00 pm LINE DANCING SEQUENCE DANCING 7.15 – 8.15 – 10.15 pm
THURSDAY	BOWLS 8.00 – 10.30 pm
FRIDAY	ART CLASS 9.30 – 11.30 am

SENIOR RESIDENTS

Meet on the 1st Thursday of each month, 2.00 – 4.00 pm.

VILLAGE HALL MANAGEMENT COMMITTEE

Meet 2nd Wednesday of each month, 8pm.

VILLAGE RESIDENTS COFFEE MORNING

3rd Thursday of each month, 10.00 – Noon.

CHAIRMAN	P HOLDCROFT	01782 393501
SECRETARY	M OXBY	01782 397629
BOOKINGS	L OXBY	01782 397629

MEIR HEATH & ROUGH CLOSE VILLAGE HALL

MONDAY	BOWLING	1:15PM – 3:30PM
	KARATE	5:00PM – 7:00PM
	AEROBICS	7:30PM – 8:30PM
	PAINTING FOR PLEASURE	6:30PM – 8:30PM
TUESDAY	CHILDRENS DANCING CLASS	4:00PM – 6:00PM
	ART CLASS	7:00PM – 9:00PM
WEDNESDAY	BOWLING	1:30PM – 3:30PM
	BOWLING	7:30PM – 9:30PM
	LACE MAKING CLASS	7:00PM – 9:00PM
THURSDAY	SEQUENCE DANCING	1:30PM – 4:00PM
	KARATE	5:00PM – 7:00PM
	AEROBICS	7:30PM – 8:30PM
FRIDAY	PRIVATE BOOKINGS	
SATURDAY	PRIVATE BOOKINGS	
SUNDAY	KARATE	10:30PM – 12:30PM
	PRIVATE BOOKINGS	

CONTACTS (V.H. MANAGEMENT COMMITTEE)

CHAIRMAN - MR M B SHAW	01782 394922
BOOKING SECRETARY – M.HERWARD	01782 396037

ST NICHOLAS CHURCH, FULFORD

CLERGY:

REV'D PETER DAKIN, REV'D CATHY DAKIN 01782 397073

CHURCH WARDENS:

MR JOHN HOOLEY 01782 393554

MRS GILL VIGGARS 01782 396500

CROSS GATE METHODIST CHAPEL

MINISTER: REV'D JOHN PALMER 01782 659343

STEWARD: MR K HAWKINS 01782 289659

ST FRANCIS CHURCH, MEIR HEATH

FATHER PAUL BLANCH 01782 393189

WINDMILL PRESERVATION GROUP

MRS G SWIFT 01782 317521

ROUGH CLOSE W.I.

MRS K BEARDMORE 01782 393032

FULFORD NEIGHBOURHOOD WATCH

MRS M TAYLOR 01782 392042

SAVERLEY GREEN NEIGHBOURHOOD WATCH

MRS P SHOTTON 01782 393884

ADAMTHWAITE NEIGHBOURHOOD WATCH

MRS R SILCOCK 01782 394214

AYNSLEY SPECIAL SCHOOL, BLYTHE BRIDGE

MRS A HARDSTAFF (HEAD TEACHER) 01782 392071

FULFORD PRIMARY SCHOOL

MRS J TARR (HEAD TEACHER) 01889 505303

MEIR HEATH PRIMARY SCHOOL

MR P SIDDLEY (HEAD TEACHER) 01782 393856

ROUGH CLOSE PRIMARY SCHOOL

ST MATTHEW'S CoE(Aided) PRIMARY SCHOOL

MR A GRIFFIN (HEAD TEACHER) 01782 394890

SPRINGCROFT PRIMARY SCHOOL, GRINDLEY LANE

MRS B MALVERN (HEAD TEACHER) 01782 394793

SHELTERED HOUSING, BLYTHE LODGE

CARE AND SUPPORT TEAM 01785 216777

APPENDIX 2 - QUESTIONNAIRE FINDINGS

- 50% of people have 2 people in a household, 20.5% have 1
- Most people use the car as their preferred mode of transport (91.5%)
- 24% know the bus times, 71% don't
- 32.5% would use buses if more destinations were available, 32% wouldn't
- 34% would use buses if they were more frequent, 29% wouldn't
- 63% consider speeding as an issue, 21% don't
- 46% consider parking as a major issue, 29% don't
- 36% consider heavy vehicles as a problem, 33% don't
- 42% consider walking as a local safety issue, 25% don't
- 45% consider cycling as a local safety issue, 36% don't
- 62% of people feel the local area is adequately covered by police, 22% don't
- 74% of people called the police in 2006, 15% did not
- 79% were satisfied with police response, 12% were not
- 49% would like a neighbourhood watch scheme, 33% don't
- 7% would like to start a neighbourhood watch scheme, 32% don't, 60% did not answer
- 24% view public transport as very important, 38% as quite important and 32% don't view it as important
- 65% view community policing as important, 25% view it as quite important
- 67% would like to see more money spent on maintaining roadside footpaths
- 52% would like to see more money spent on maintaining countryside walk routes
- 62% would like to see more money spent on maintaining parks and open spaces
- 53% would like to see more money spent on preserving wildlife areas
- 51% would like to see more money spent on supporting local initiatives
- 82% view litter as a concern
- 50% would like to see more shrubs planted in the area
- 68% think new little bins are required
- 54% currently recycle, 22% don't
- 88% recycle bottles
- 84% recycle tins
- 77% recycle garden waste
- 82% recycle other things
- 74% find it convenient to recycle
- 39% would recycle more if collection points were available
- 61% view dog fouling as an issue
- 66% feel special bins should be introduced
- 62% feel more dog fouling notices should be installed
- 37% feel that there should be more designated areas for dog walkers, 38% don't
- 70% think there is adequate street lighting, 24% don't
- 51% would like more street lighting introduced
- 60% of people are concerned about radioactive proliferation
- 71% say recycling is very important to their family
- 84% say that preservation of the greenbelt is very important to their family
- 79% say preservation of wildlife is very important to their family
- 71% say that preservation of local landmarks is very important to their family

- 81% say the general appearance of the villages is very important to their family
- 20% of people use leisure activities in the village, 73% don't
- 34% use the village halls, 53% don't
- 18% say pre-school activities are very important
- 26% say primary schools are very important
- 29% say secondary schools are very important
- 27% say higher school education is very important
- 18% say that night school is very important
- 29% say they are getting enough information on further education courses, 50% say that they aren't
- 12% use night school facilities
- 24% say that there is enough higher education courses in the area, 41% say there isn't
- 26% go outside Fulford parish to courses
- 8% of people would like access to building courses, 19% would like IT skills, 1% would like business management and 6% would like to do another
- 52% would like more teaching input from industry into schools
- 63% view education as very important
- 38% would enrol to night school if it was subsidized, 24% wouldn't
- 21% would rate crime prevention as good, 45% say its poor
- 41% would rate hospital care as good, 36% say it isn't
- 49% would rate access to health centres as good, 29% wouldn't
- 55% say that availability of doctors is good, 34% say its poor
- 37% say availability of dentists is good, 49% say its poor
- 77% would support doctor / dentists if they were available locally
- 63% own there own computer with internet, 36% don't
- 63% have a printer
- 36% have a photocopier
- only 14% would make use of PC IT facilities
- 10% have visited the PC website recently, 73% haven't
- 19% would like to receive email update from the PC, 53% wouldn't
- 43% say that computing and internet access is very important, 30% say its quite important
- 35% say that is it is very important to be up to date with local issues, 44% say it is quite important
- only 28% know their local councillor, only 26% know their borough councillor
- 45% know their parish councillor
- 35% are aware of how parish council money is spent
- 87% are aware of the parish newsletter
- 36% are aware of the parish website
- 55% are aware of PC meetings
- only 12% are aware of the new parish office, 19% will use the parish office
- 30 review local planning applications
- 22% walk the local footpaths every day, 31% walk them weekly, 14% walk them yearly
- 30% say footpaths are maintained to a high standard
- 28% say parish affairs are very important